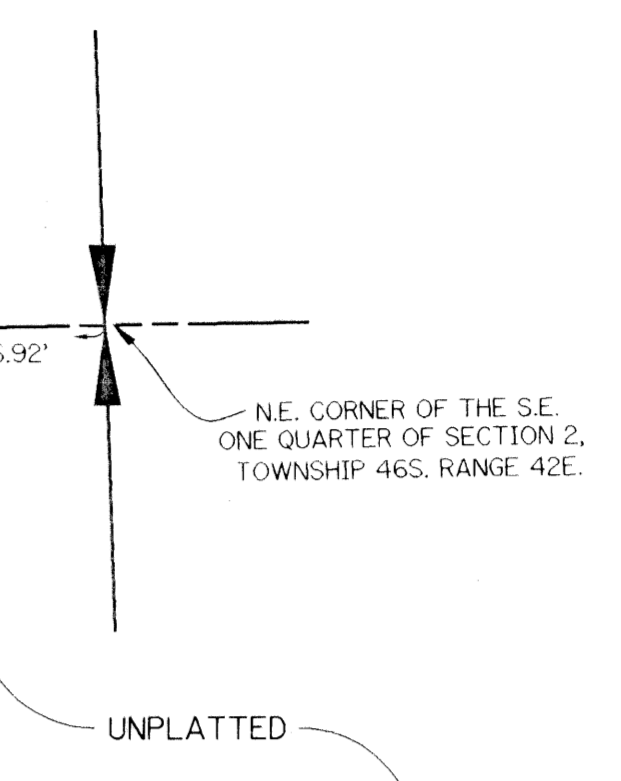
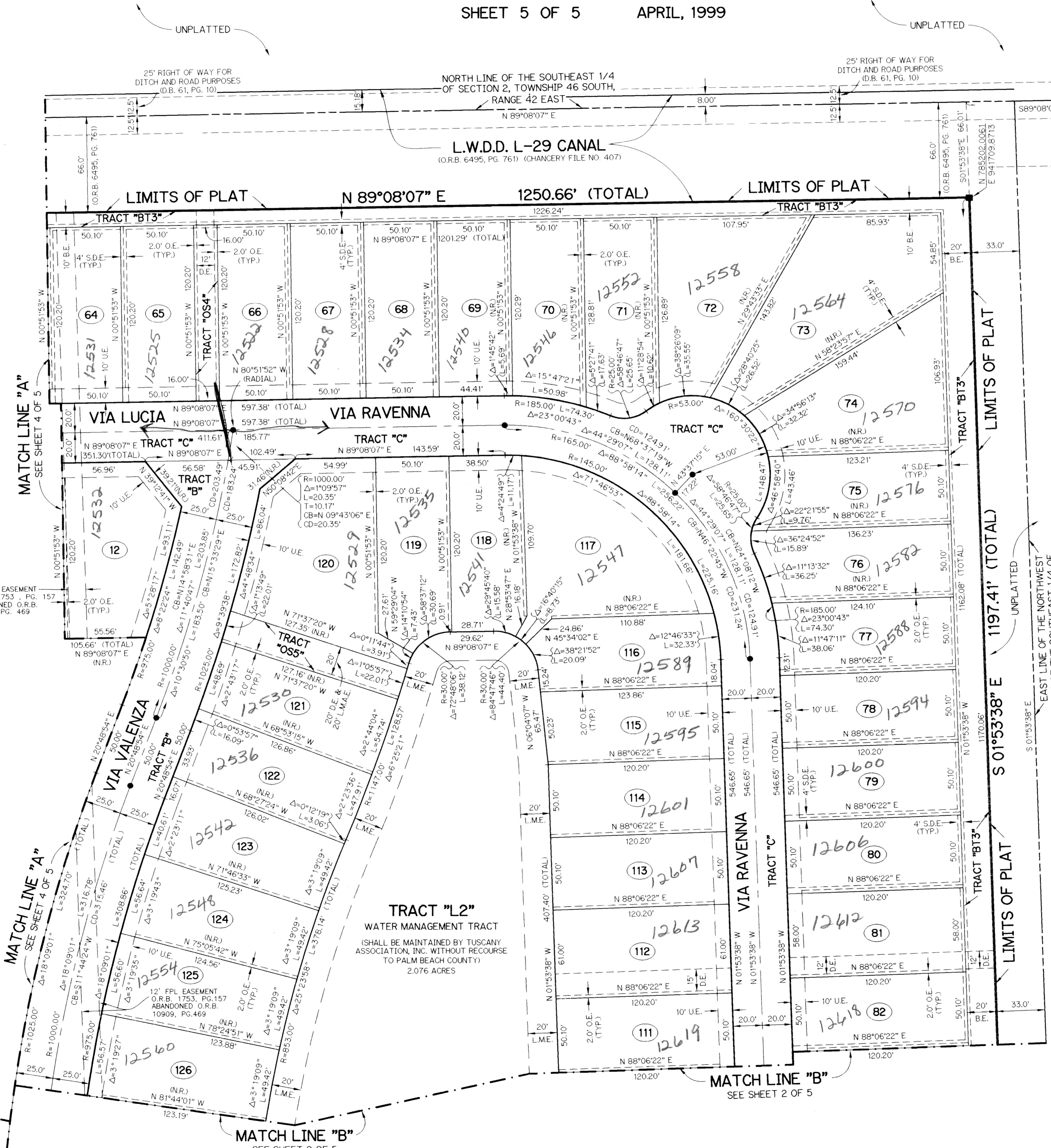
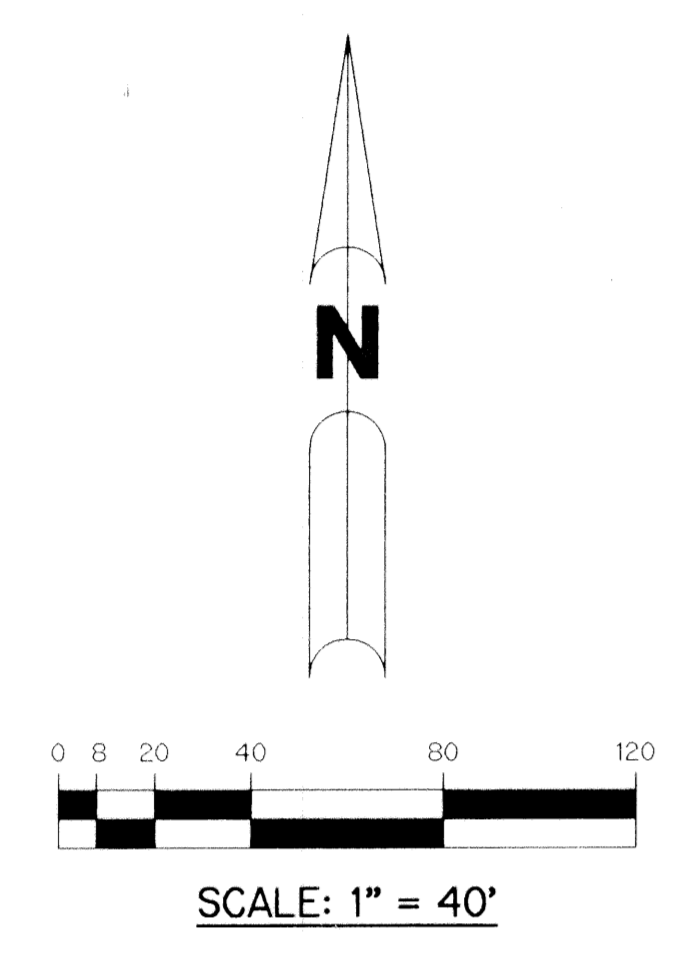


CORAL LAKES XII

CORAL LAKES PLANNED UNIT DEVELOPMENT

A PARCEL OF LAND LYING IN SECTION 2,
TOWNSHIP 46 SOUTH, RANGE 42 EAST,
PALM BEACH COUNTY, FLORIDA.

SHEET 5 OF 5 APRIL, 1999

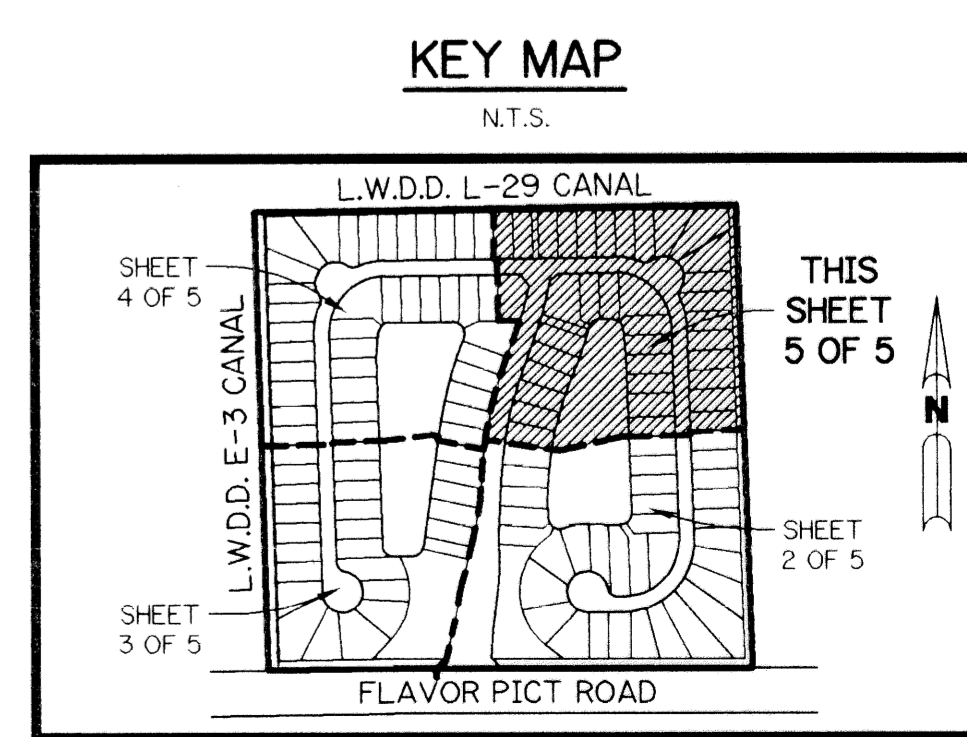


- LEGEND:**
- - SET PERMANENT REFERENCE MONUMENT, LB-6674
 - △ - PERMANENT CONTROL POINT, PSM #4190
 - ∠ - DELTA ANGLE
 - B.E. - BUFFER EASEMENT
 - C.L. - CENTERLINE
 - D.B. - DEED BOOK
 - D.E. - DRAINAGE EASEMENT
 - L. - ARC LENGTH
 - L.A.E. - LIMITED ACCESS EASEMENT
 - L.M.A.E. - LAKE MAINTENANCE ACCESS EASEMENT
 - L.M.E. - LAKE MAINTENANCE EASEMENT
 - L.W.D.D. - LAKE WORTH DRAINAGE DISTRICT
 - N.R. - NOT RADIAL
 - N.T.S. - NOT TO SCALE
 - O.E. - OVERHANG EASEMENT
 - O.R.B. - OFFICIAL RECORD BOOK
 - P.B. - PLAT BOOK
 - PGS. - PAGES
 - P.S.M. - PROFESSIONAL SURVEYOR AND MAPPER
 - R. - RADIUS
 - R/W - RIGHT-OF-WAY
 - S.D.E. - SWALE DRAINAGE EASEMENT
 - S.T. - SURVEY TIE
 - U.E. - UTILITY EASEMENT
 - C.B. - CHORD BEARING
 - N 737648.0171 - DENOTES STATE PLANE COORDINATES
 - E 905258.2326

NOTE:

COORDINATES SHOWN ARE GRID COORDINATES
 DATUM = NAD 83 (1990 ADJUSTMENT)
 ZONE = FLORIDA EAST ZONE
 LINEAR UNIT = U.S. SURVEY FEET
 COORDINATE SYSTEM 1983 STATE PLANE
 TRANSVERSE MERCATOR PROJECTION
 ALL DISTANCES ARE GROUND
 SCALE FACTOR = 1.000034748
 NO ROTATION; PLAT BEARINGS = GRID BEARING

THIS INSTRUMENT PREPARED BY
 WILBUR F. DIVINE, P.S.M. 4190, STATE OF FLORIDA
 LAWSON, NOBLE AND WEBB, INC., LB-6674
 ENGINEERS PLANNERS SURVEYORS
 420 COLUMBIA DRIVE, SUITE 110
 WEST PALM BEACH, FLORIDA



SECTION: Coral Lakes 12
 DATE: 05/18/99
 FLOOD: NAF # 2053
 QUAD: # 310
 SL: 98-1303
 TAZ: 960
 FUD NAME: Ivy Bay